



Papillon adulte



4



nervures



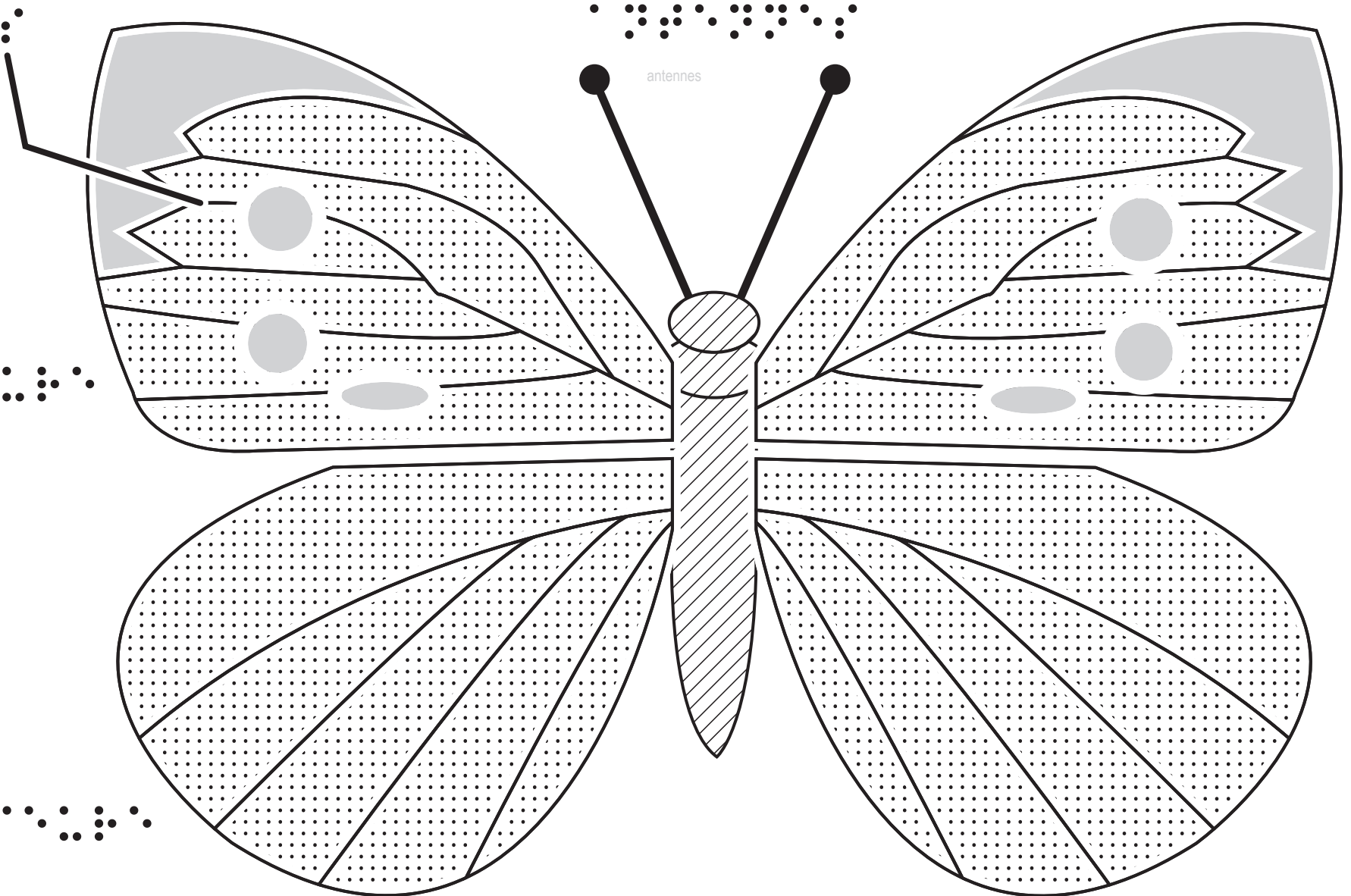
antennes



ailes  
antérieure



aile postérieure



Chenille (larve)



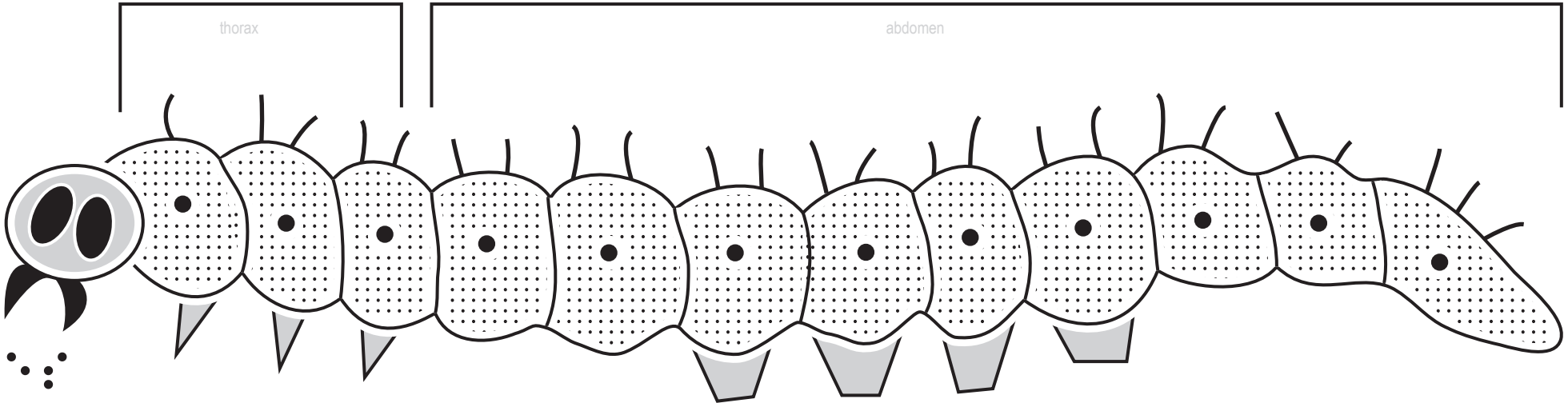
Chenille (larve)

thorax

abdomen

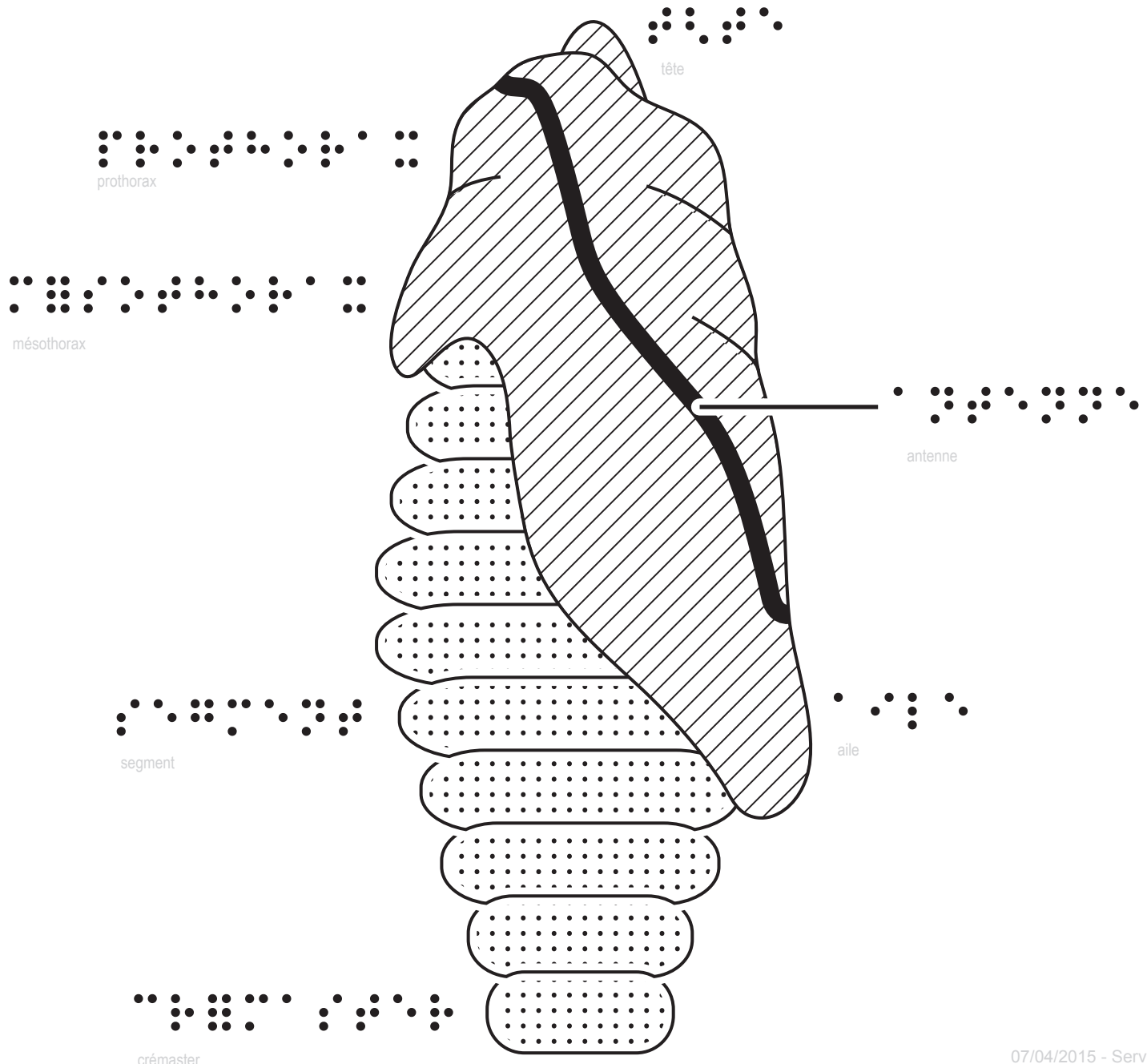
tête

pièces  
buccales



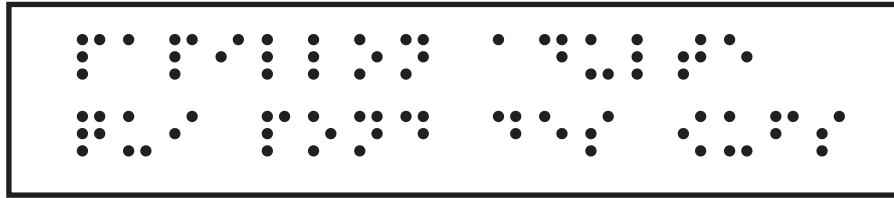
Chrysalide (cocon) ou nymphe

Chrysalide (cocon) ou nymphe

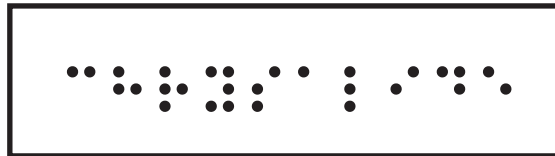
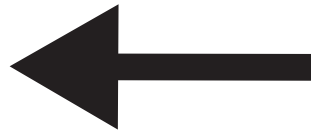




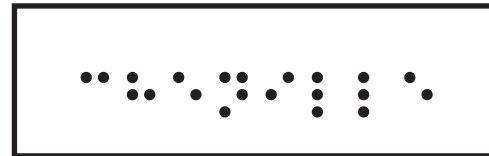
Les différentes formes du papillon



Papillon adulte  
qui pond des œufs



chrysalide



chenille