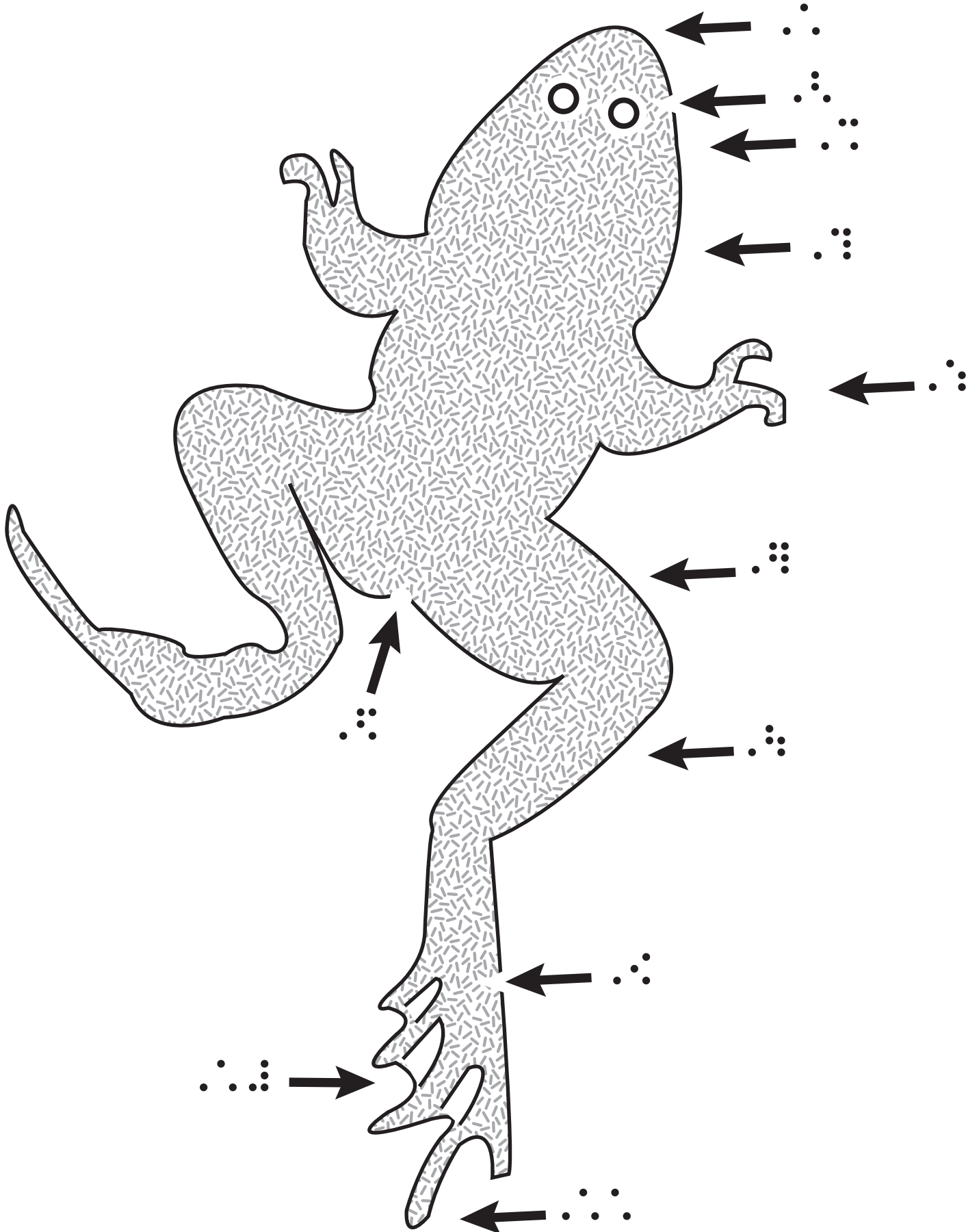
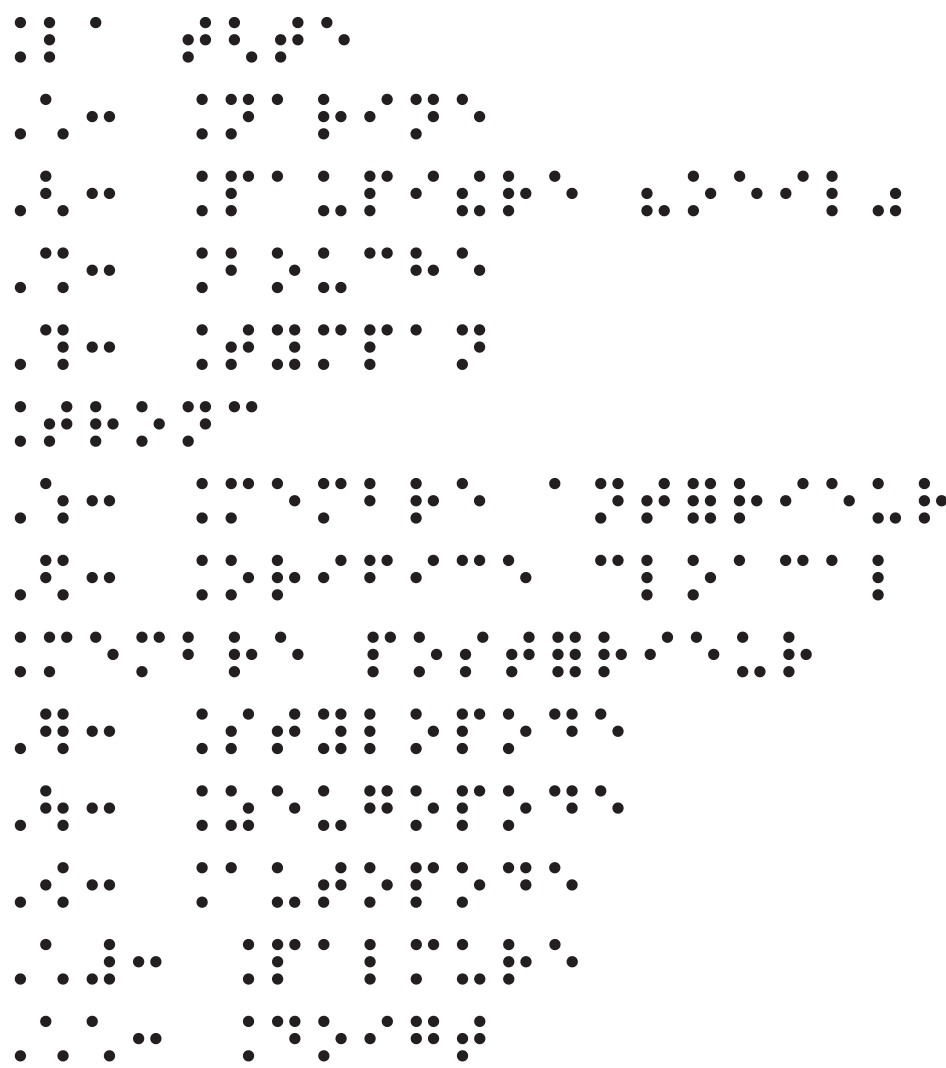


Les axes d'organisation des vertébrés: La grenouille





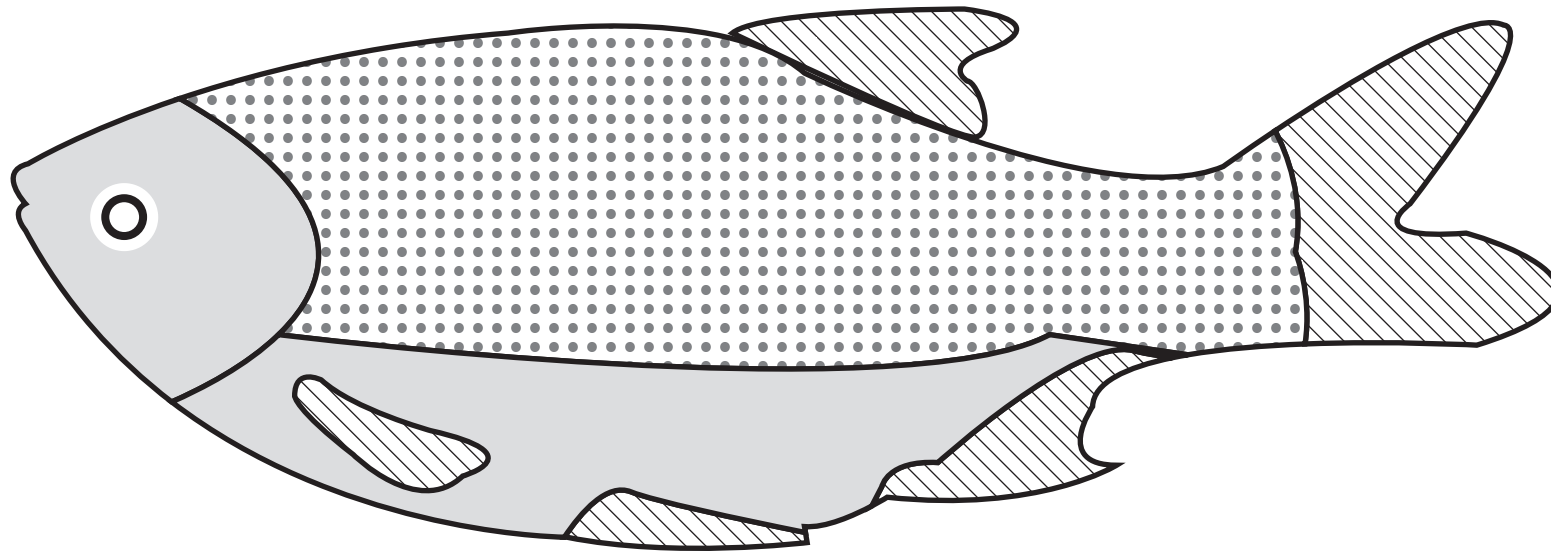
Légende de la grenouille



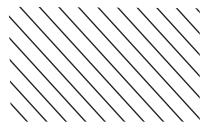
- La tête
- 1: Narine
- 2: Paupière (oeil)
- 3: Bouche
- 4: Tympan
- Tronc
- 5: Membre antérieur
- 6: Orifice cloacal
- Membre postérieur
- 7: Stylopode
- 8: Zeugopode
- 9: Autopode
- 10: Palmure
- 11: Doigt



Les axes d'organisation des vertèbres  
Le poisson:  
Schéma 1



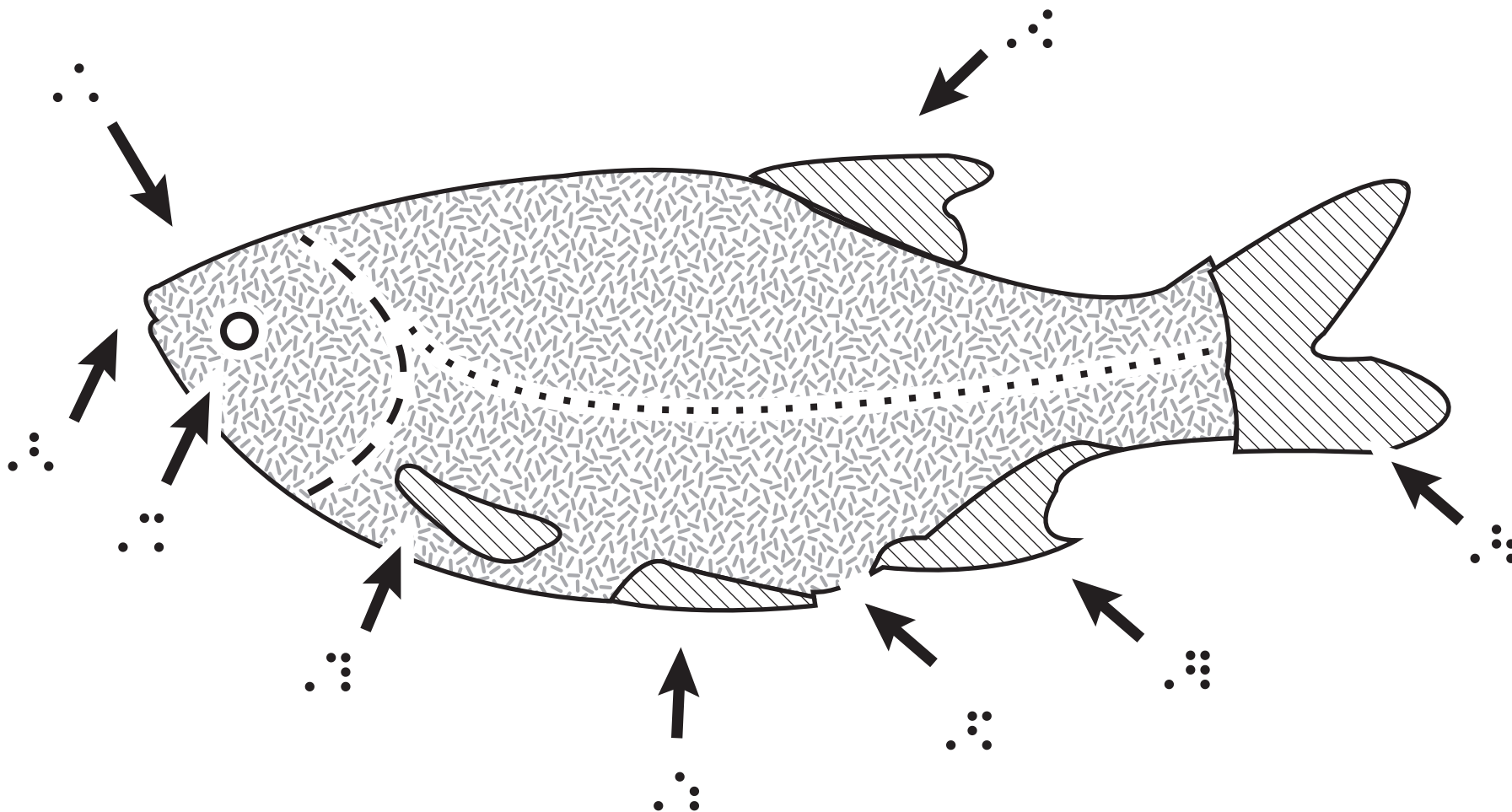
Écaille



Nageoire



Schéma 2





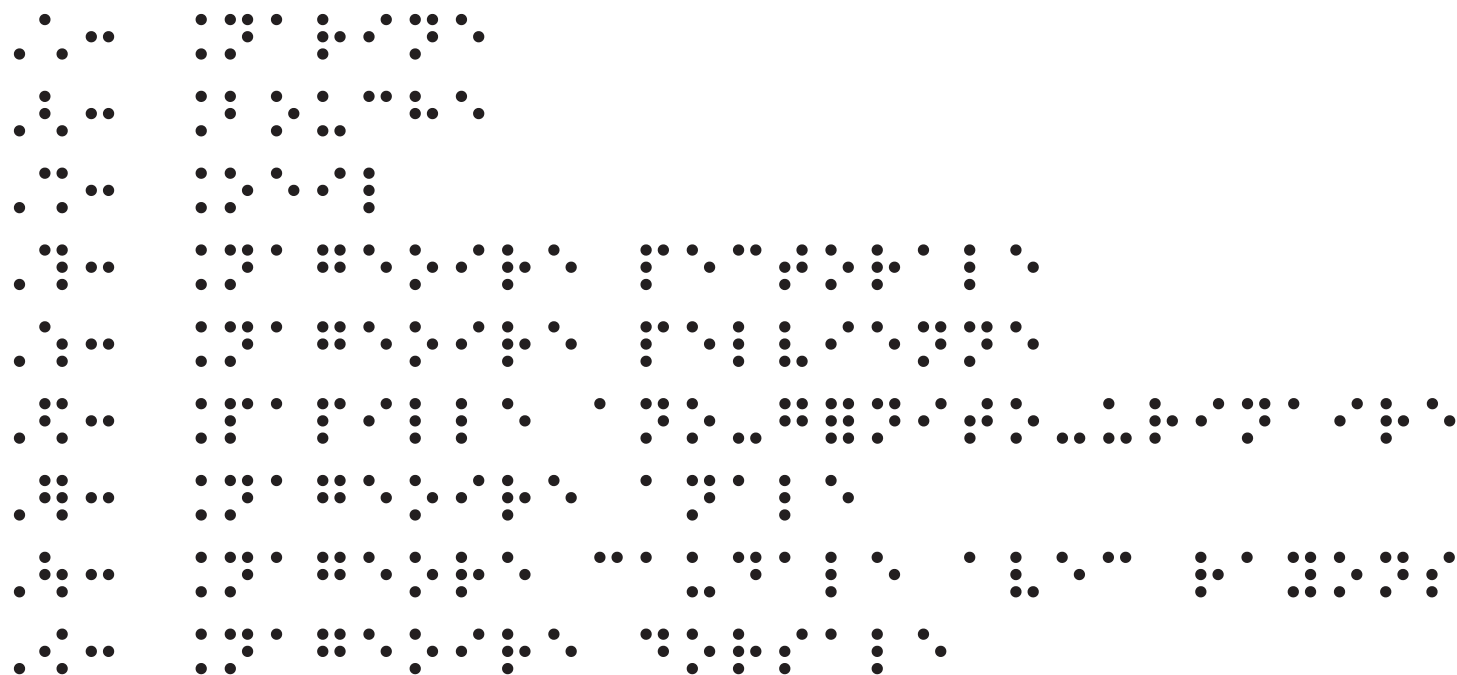
Légende schéma 2



Opercule



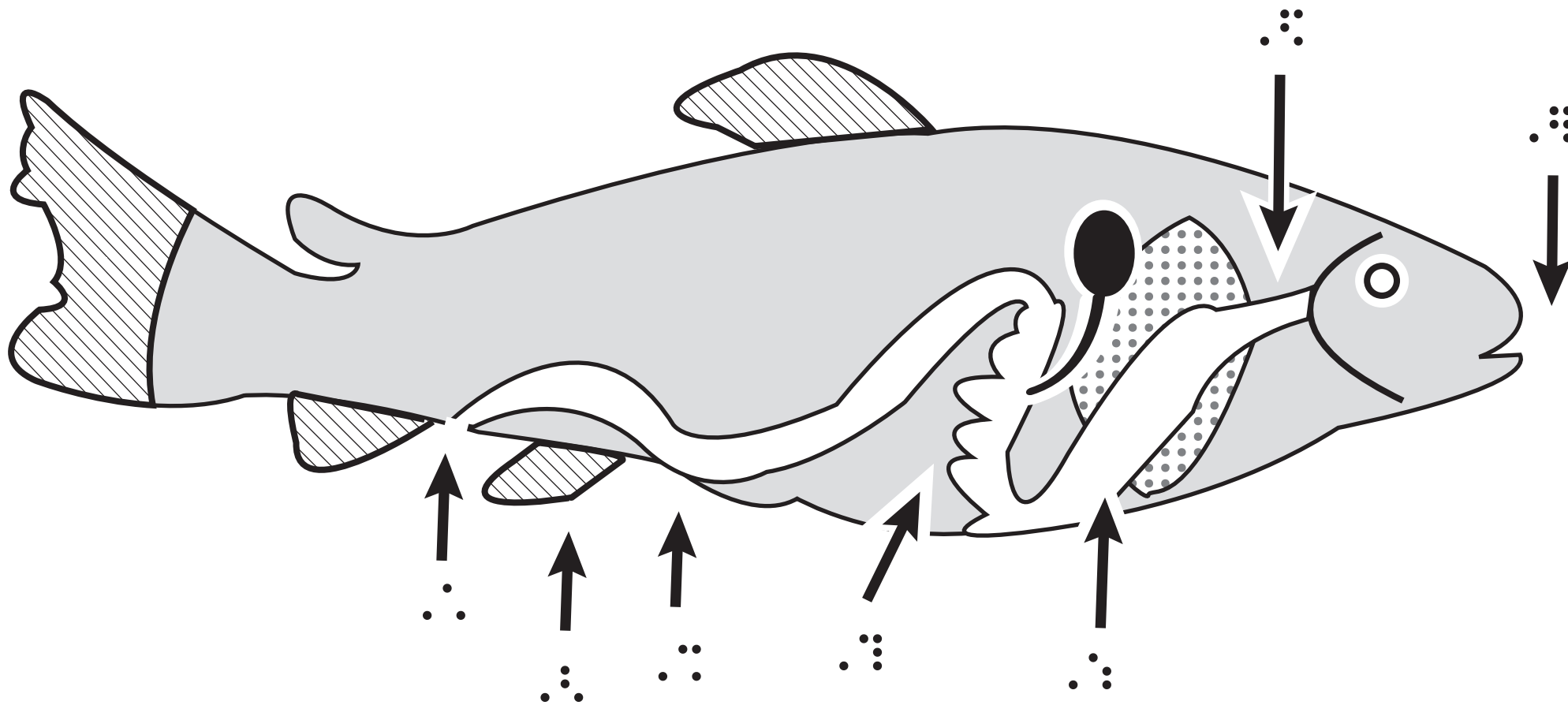
Ligne latérale



- 1: Narine
- 2: Bouche
- 3: Oeil
- 4: Nageoire pectorale
- 5: Nageoire pelvienne
- 6: Papille ano-génito-urinaire
- 7: Nageoire anale
- 8: Nageoire caudale avec rayons
- 9: Nageoire dorsale

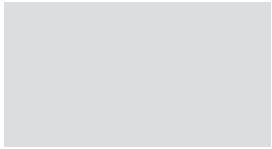


Schéma 3

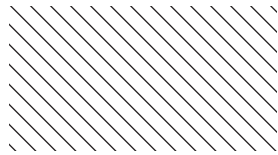




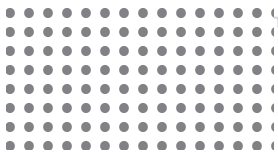
Légende schéma 3



Corps du poisson



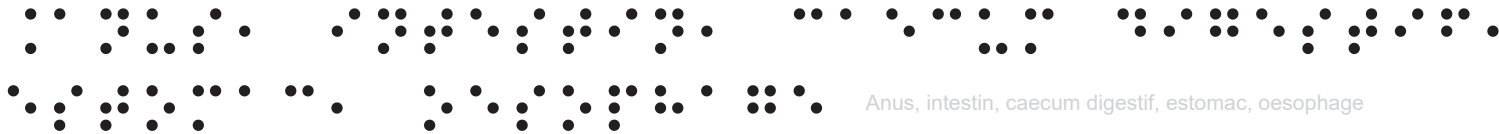
Nageoire



Sexe 1



Foie



Anus, intestin, caecum digestif, estomac, oesophage

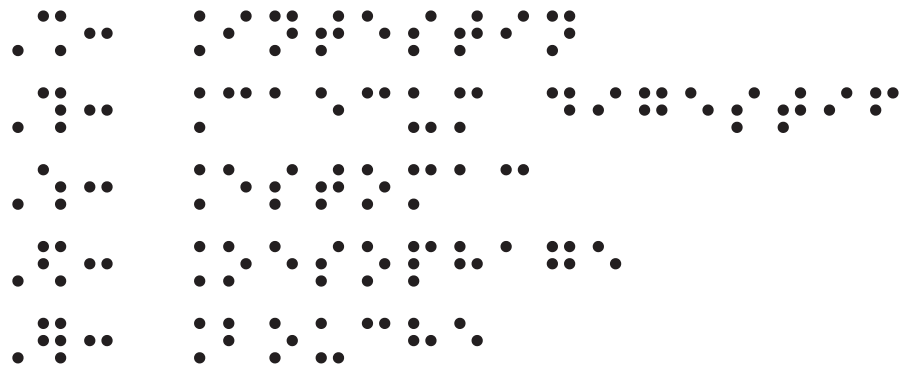


Vésicule biliaire



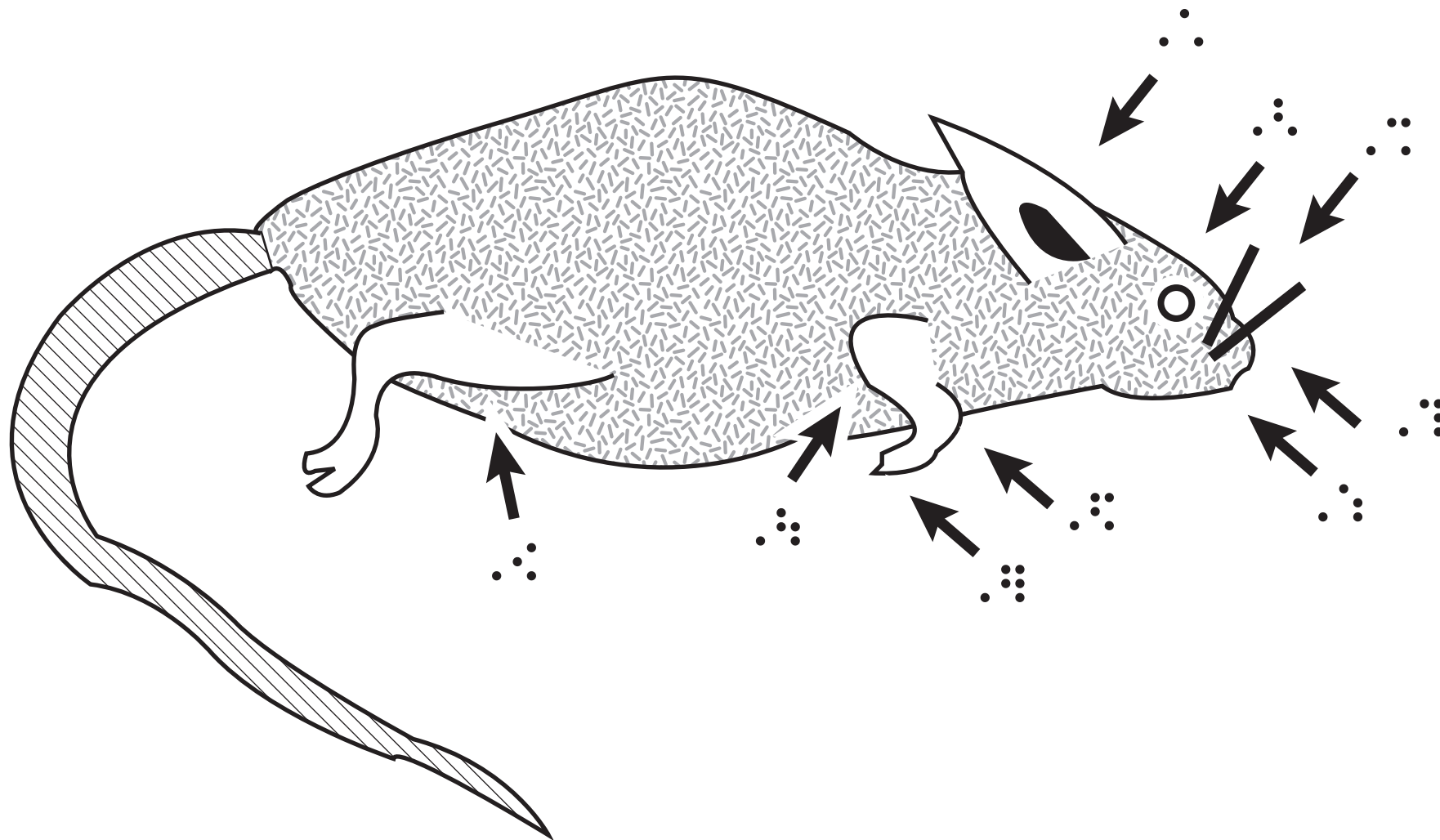
1: Anus

2: Nageoire pelvienne



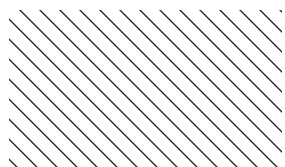
- 3: Intestin
- 4: Caecum digestif
- 5: Estomac
- 6: Oesophage
- 7: Bouche



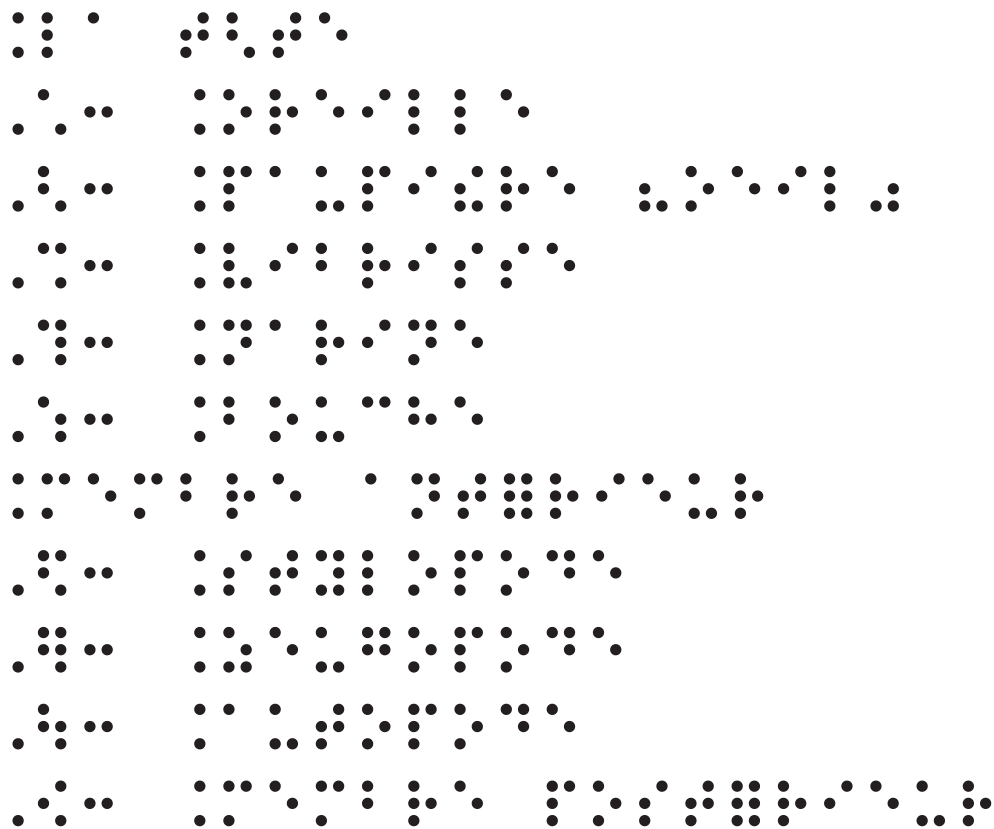




La légende de la souris



La queue



- La tête
- 1: Oreille
  - 2: Paupière (oeil)
  - 3: Vibrisse
  - 4: Narine
  - 5: Bouche
- Membre antérieur
- 6: Stylopode
  - 7: Zeugopode
  - 8: Autopode
  - 9: Membre postérieur