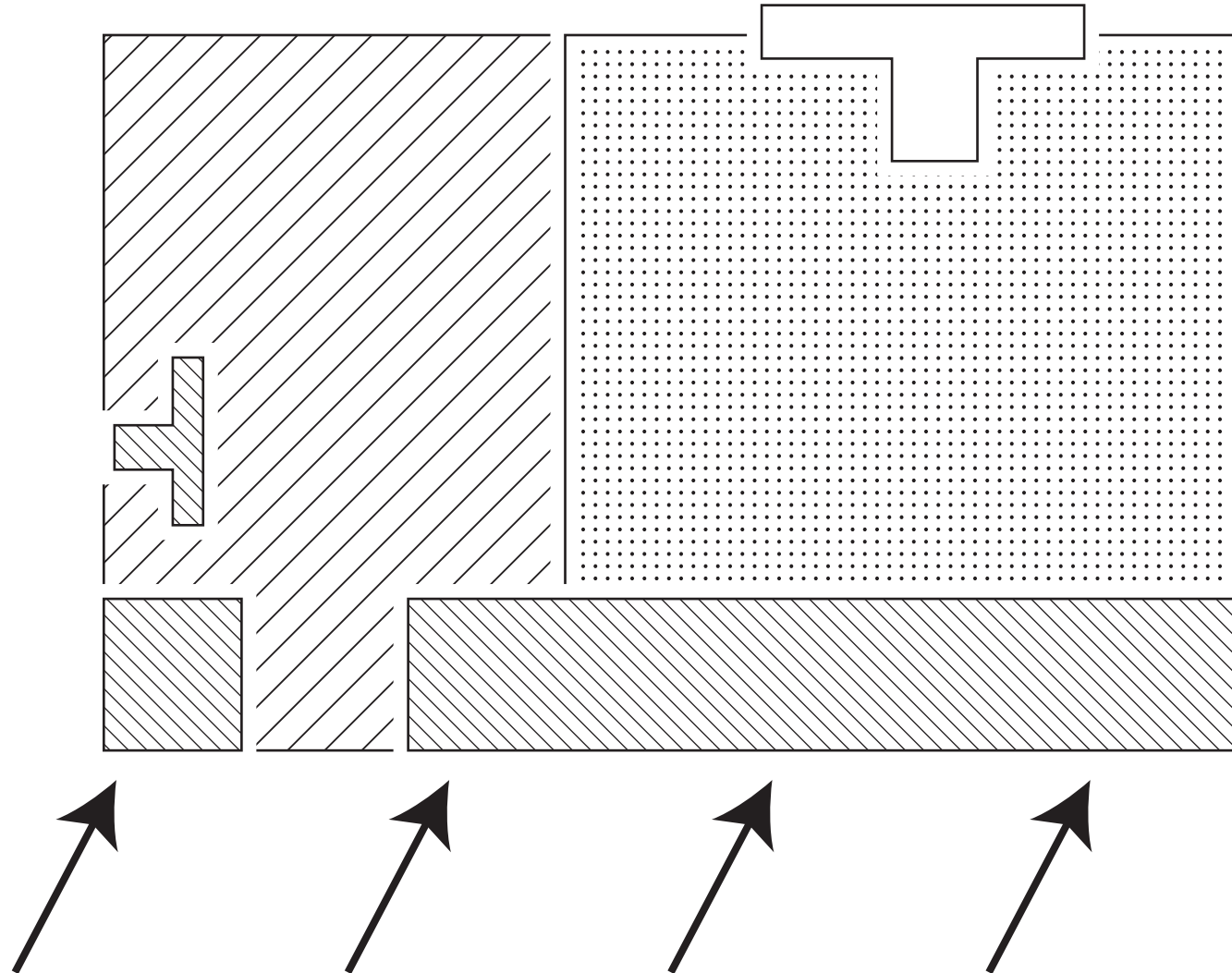
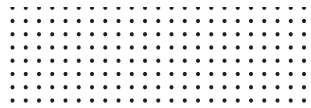


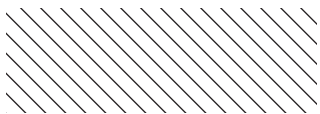
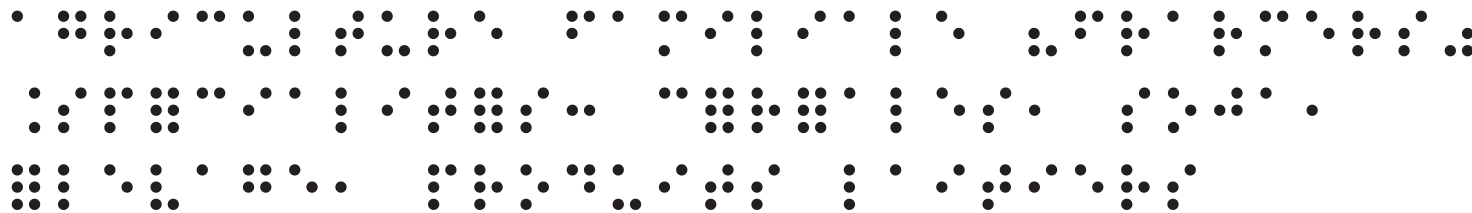


Grands Lacs

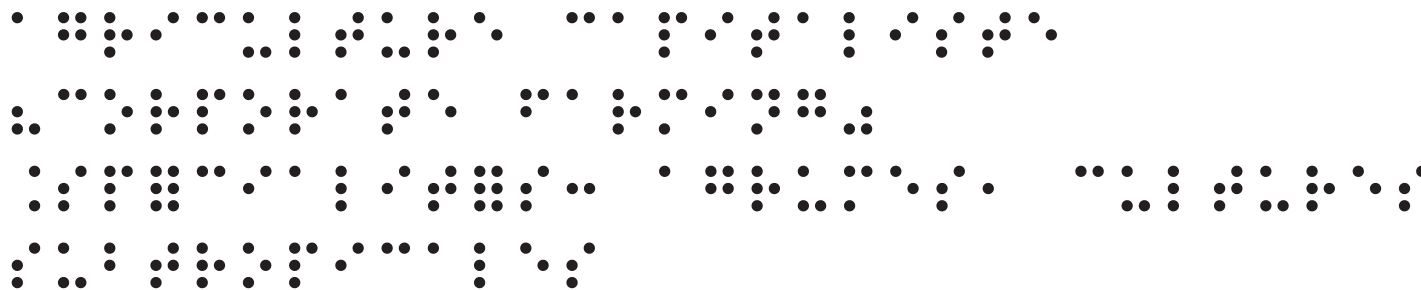




agriculture familiale (farmers)  
Spécialités: céréales, soja,  
élevage, produits laitiers



agriculture capitaliste  
(corporate farming)  
Spécialités: agrumes, cultures  
subtropicales



flux d'ouvriers agricoles d'origine latino-américaine



espace de réserve  
(élevage extensif)

